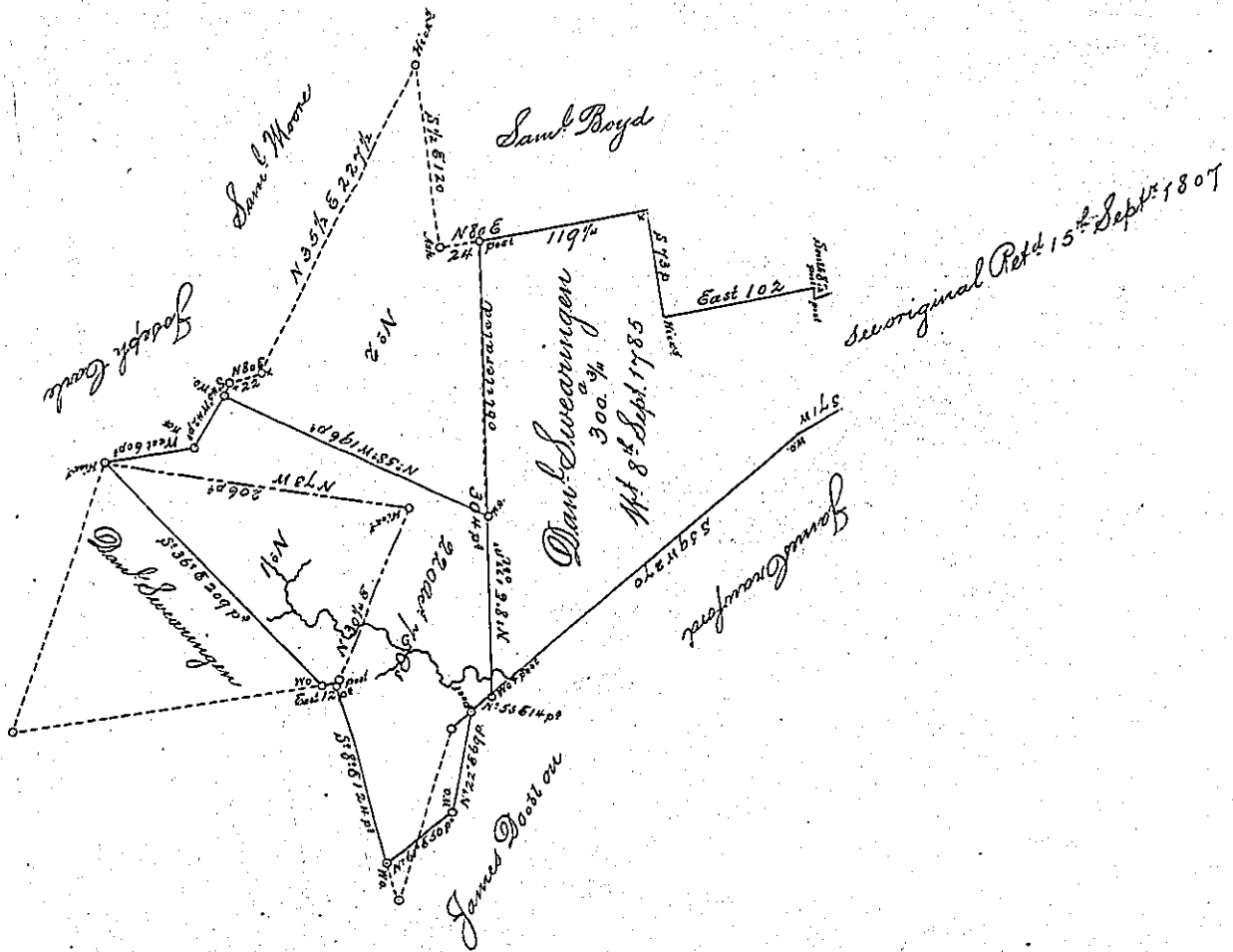


The line S 5° 36' E 209 P¹ is agreeable to Capt. White's Testimony
 The line N 5° 58' W 196 P² is nearly on the Top of y^e Ridge mentioned in Nicholas Dawson's Description
 Presley Nevill D^y



A Draught of a Survey called "Whitelands" situate on the Waters of Racoon Creek in Washington County, containing 220 Ac^{ts} & 5 P^{ts} and the usual Allow^{ce} for Roads &c. executed August 19th 1790 in Pursuance of a Warrant granted to Jⁿ White for 100 Ac^{ts} dated Sept^r 19th 1785. The dotted Lines describe two interfering Surveys here laid down By order of the Board of Property dated June 7 1790.

No 1. Contains 200 Ac^{ts} or as surveyed y^e 22nd Feby 1786 on a Virg^l Entry in the name of Dan^l Swearingen and is ret^d to the Surv^r Gen^l Office -

No 2. Contains 293 Ac^{ts} 32nd 14 P^{ts} was surveyed y^e 14th Feby 1787 on a Warrant granted to Henry Wilson and aft^r d^d to Sam^l Moore for 300 Ac^{ts} dated Sept^r 2^o 1785 - & is also returned.

Dan^l Brodhead Esq^r S. G^l

Presley Nevill } D^y
 Matt^h Ritchie }

IN TESTIMONY that the above is a copy of the original remaining on file in the Department of Internal Affairs of Pennsylvania, made conformably to an Act of Assembly approved the 16th day of February, 1833, I have hereunto set my Hand and caused the Seal of said Department to be affixed at Harrisburg, this

Seith day of November 1800.
 James W. Patton
 Secretary of Internal Affairs.